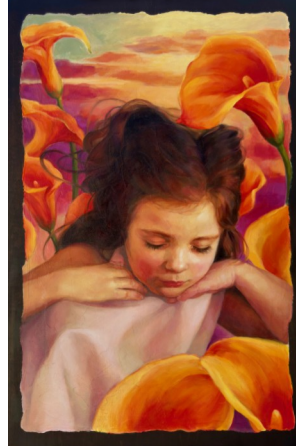


# Jessie Kennedy Steinberg



310-948-7973

[Jessie@jessartstudios.com](mailto:Jessie@jessartstudios.com)

[www.jessartstudios.com](http://www.jessartstudios.com)

Jessie Kennedy Steinberg is an American imaginative realism oil painter, charcoal, and soft pastel artist living and working in Kyle, TX. Though primarily self taught as a fine artist, she worked extensively as a muralist and scenic painter throughout her studies at Texas Wesleyan University in Fort Worth, TX, where she holds a BFA Cum Laude in Acting.

Following graduation, she moved to Los Angeles, CA, and served as Children's Program Director for a series of privately owned art studios where she taught the basics of fine art drawing and painting in the mediums of charcoal, soft pastel, and oil painting. After which, she moved to Knoxville, TN, where she opened JessArt Studios, her own atelier for children. In Knoxville, TN, she also worked for the nonprofit, Community School of the Arts, bringing art education to underprivileged youth. Additionally, she participated in Knoxville's annual Dogwood Arts Festival, where she became an award-winning sidewalk chalk artist.

Upon returning to Texas, she became a member of Bent Tree Gallery in Wimberley, TX, until its closure in 2022. It is at this time that she received a breast cancer diagnosis which put her artistic endeavors on hold. After chemotherapy, surgeries, and radiation at MD Anderson in Houston, TX, she was declared in remission.

Frequent visits to the Museum of Fine Arts Houston and local galleries shifted her perspective as an artist, and she developed a deeper appreciation for artistic narrative and figuration which could express her residual emotions, post illness. Her soft and gentle oil paintings are not merely beautiful, they are a longing for refuge and tranquility after years of treatment. The worlds she creates are innocent and carefree, providing dreamscapes to alleviate life's inherent heartache and volatility.

## BEE CAVE ARTS FOUNDATION - ARTIST REGISTRY